

# RedViking Visitor Safety Training



## Welcome to RedViking!

RedViking is committed to Zero Accident Performance and is dedicated to Safety Excellence. We want to ensure your visit to our facility is a safe one and this brief presentation provides pertinent visitor safety information for that purpose.

RedViking follows all MIOSHA safety requirements.



## GETTING TO KNOW THE STAFF

---



- Rod Emery – VP of Operations
- Phone: 734-637-2239
- Email: [remery@redviking.com](mailto:remery@redviking.com)



- Kevin Presley – Compliance Manager
- Phone: 734-277-6723
- Email: [kpresley@redviking.com](mailto:kpresley@redviking.com)



- Randy Langdon – Mechanical Build Manager
- Phone: 734-637-1902
- Email: [rlangdon@redviking.com](mailto:rlangdon@redviking.com)



- Justin McKernan – Electrical Build Manager
- Phone: 734-658-9166
- Email: [jmckernan@redviking.com](mailto:jmckernan@redviking.com)



- Dan Gruenwald – Shipping and Receiving Manager
- Phone: 734-564-0495
- Email: [dgruenwald@redviking.com](mailto:dgruenwald@redviking.com)

**COVID 19**  
CORONAVIRUS DISEASE

# Help prevent the spread of respiratory diseases like COVID-19

Avoid close contact with people who are sick.

Cover your cough or sneeze with a tissue, then throw the tissue in the trash.

Clean and disinfect frequently touched objects and surfaces.

Stay home when you are sick, except to get medical care.

Wash your hands often with soap and water for at least 20 seconds.

Avoid touching your eyes, nose, and mouth.



**PERSONAL PROTECTIVE EQUIPMENT (PPE)**

---

Safety Glasses with side shields – Must be worn at all times in any manufacturing facility.  
**TINTED & MIRROR SAFETY GLASSES ARE NOT ALLOWED**



**APPROVED SAFETY GLASSES (Must meet ANSI Z87. 1 standard)**



## PERSONAL PROTECTIVE EQUIPMENT (PPE)

---

Hearing Protection – During certain machine testing/equipment operation when noise levels reach or exceed 85 decibels hearing protection is required. Disposable ear plugs and earmuffs are available.



## PERSONAL PROTECTIVE EQUIPMENT (PPE)

---

Footwear – open-toe, open-heel and high-heel shoes are prohibited. Steel-toed or composite toe safety shoes are required if working with heavy equipment on manufacturing floor. Safety toe covers are also acceptable.



## PERSONAL PROTECTIVE EQUIPMENT (PPE)

---

Other PPE – Other PPE, such as hard hats, gloves, harness, etc., may be required depending on tasks being performed. Discuss requirements with point of contact.



**Natural Rubber**



**Polyvinyl Alcohol (PVC)**



**Nitrile**



**Neoprene**



**Polyvinyl Chloride (PVC)**



**Cotton**



**Wire mesh**



**Kevlar**



**Welding**



**Leather**



**Anti-vibration**

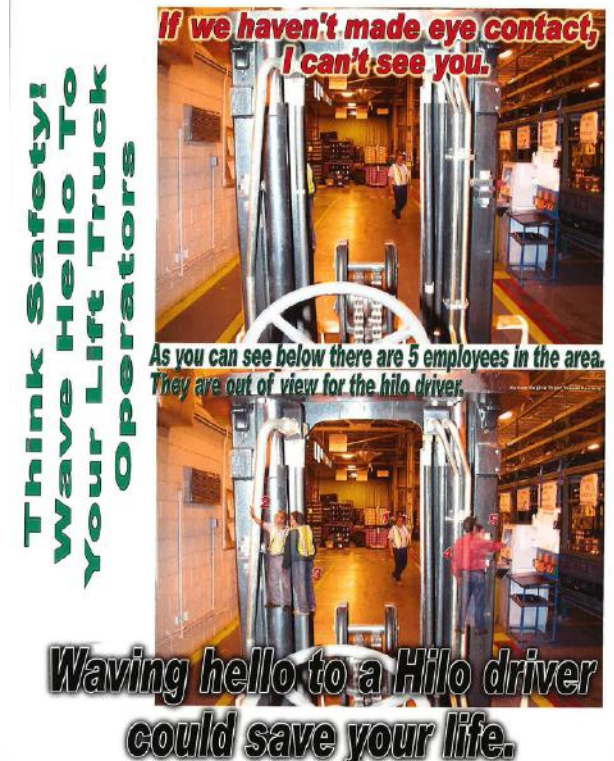


## FORKLIFTS AND AISLE WAYS

While visiting the RedViking manufacturing or panel shop, please be aware of the operation of forklifts and other vehicles in the building.

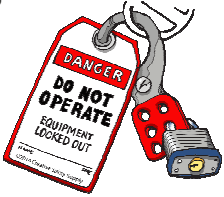
Please abide by the following forklift and vehicle safety rules:

- Always be aware of forklift and vehicle traffic in the area. Listen for vehicle horns, especially at intersections.
- Be sure to make eye contact or wave at the driver when a vehicle is nearby. (See picture to the right.)
- Stay within the designated pedestrian walkways.
- Cross vehicle aisle and intersections carefully.
- Never stand on lift forks or walk under elevated lift forks.
- Do not ride on the vehicle unless sitting in a passenger seat with a seatbelt fastened.
- All forklift & vehicle drivers must have a valid permit/license.



## LOCKOUT TAGOUT

---

-  When performing work on a machine or electrical panel where potential hazardous energy is present, it will be necessary to perform lockout/tagout to prevent serious injury or death. Follow procedures on the lockout/tagout placard posted on the machine main control panel.
- Procedures should be performed only by those personnel with lockout/tagout training and using their own personal lockout device.
- Never remove someone else's lock unless permission has been given by the owner of the lock.
- If live work is to be performed:
  - A Live Work Permit needs to be filled out.
  - Additional training may be needed.
  - Make sure to wear proper PPE.



## EMERGENCY SITUATIONS

---



Fire – Find the nearest exit, report in between the two buildings at the end of the parking lot and find point of contact.

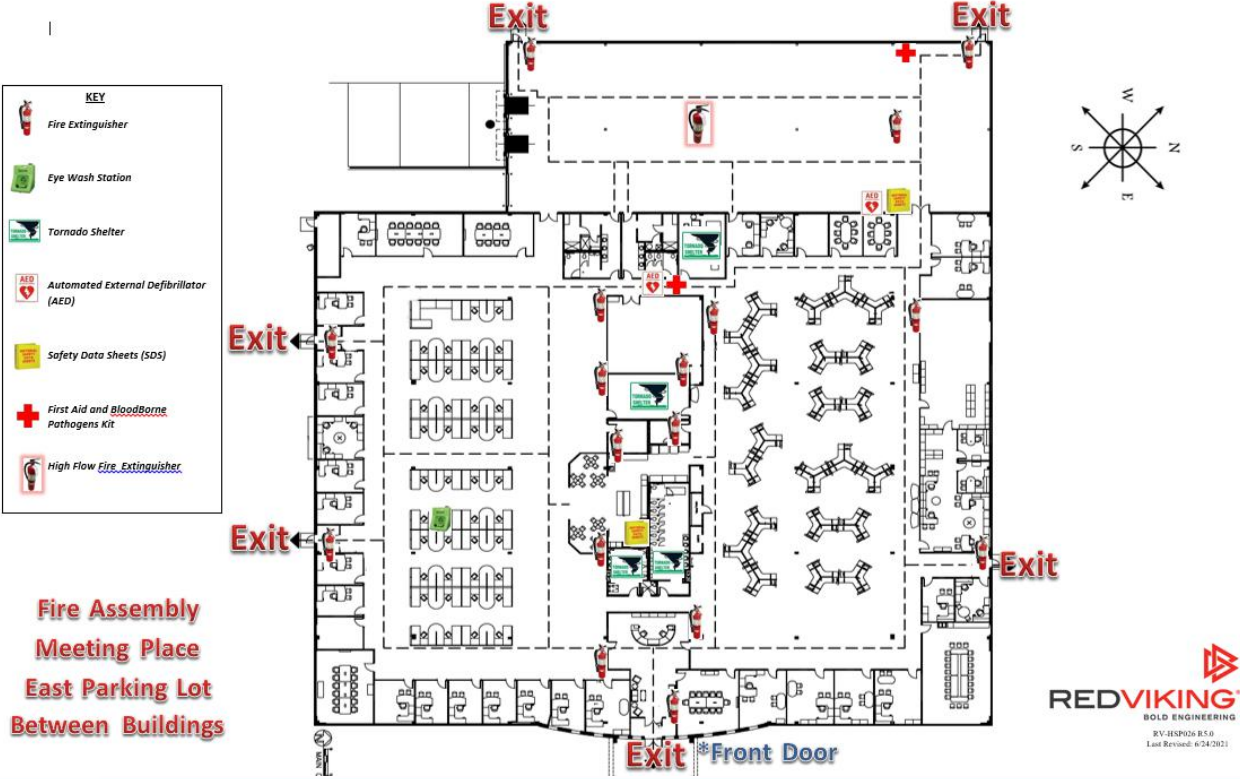


Tornado – Report to the nearest tornado shelter, each designated with a tornado sign. Look for emergency maps posted around each building.

- 46247 Five Mile Rd – Michigan Engineering Center (MEC, North building) – Bathrooms, game room, strategy room.
- 46201 Five Mile Rd – Michigan Build Center (MBC, South building) – CMM Room

EMERGENCY SITUATIONS EVACUATION MAP

Michigan Engineering Center – 46247 Five Mile Rd. Emergency Evacuation Map

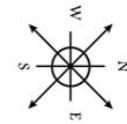
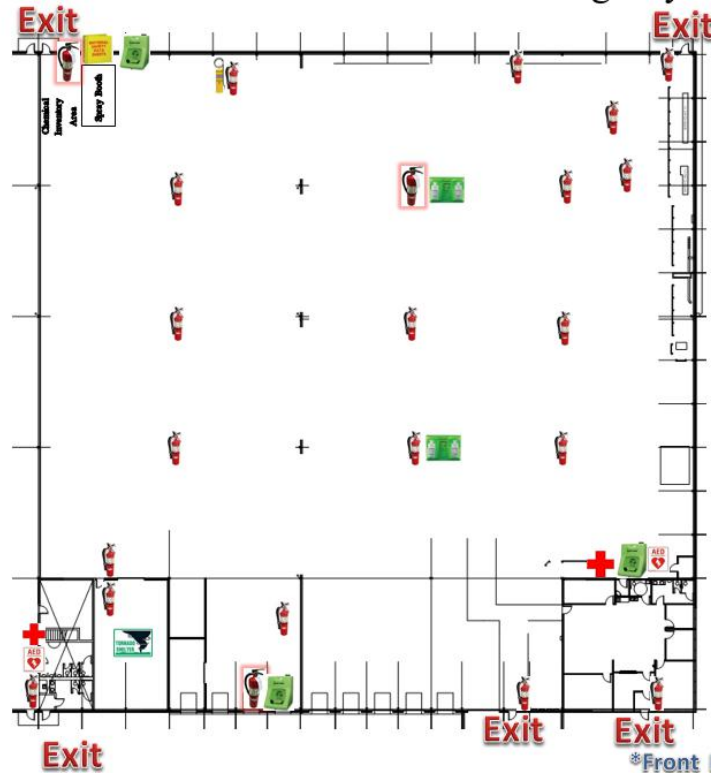


# EMERGENCY SITUATIONS EVACUATION MAP

## Michigan Build Center – 46201 Five Mile Rd. Emergency Evacuation Map

**KEY**

-  Fire Extinguishers
-  Tornado Shelter
-  Automated External Defibrillator (AED)
-  Safety Data Sheets (SDS)
-  Eye Wash Stations
-  First Aid and Bloodborne Pathogens Kit
-  High Flow Fire Extinguisher



Fire Assembly Meeting Place  
East Parking Lot  
Between Buildings

**REDAVIKING**  
BOLD ENGINEERING

BV-HSP027 R.7.6  
Last Revised: 6/24/2021

## EMERGENCY SITUATIONS

---

- Spills – In the event of a spill contact the spill team. There are signs posted around the buildings listing spill team contact information.

### Spill Team:

- Kevin Presley (734) 277-6723
- Doug Meadows (248) 231-5492
- Will Pientowski (734) 664-8159
- Rich Gismonde (734) 564-1198



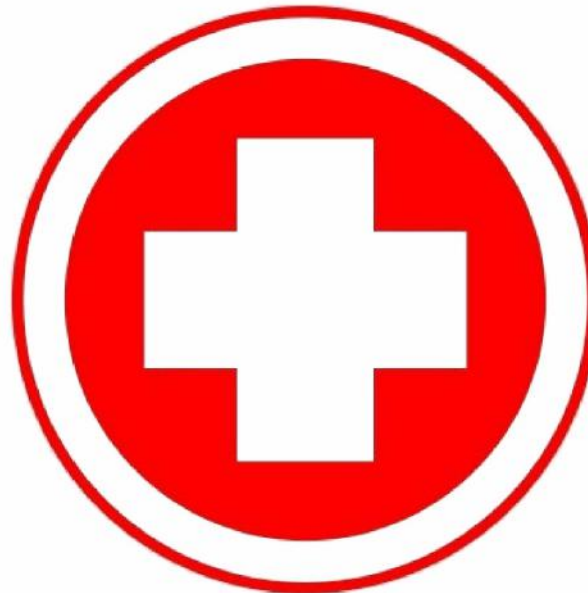
## EMERGENCY SITUATIONS

---

RedViking does have trained first responders onsite in case of an emergency:

***NOTE: In an emergency, call 911 before contacting a first responder.***

- Kevin Presley (734) 277-6723
- Glen Cooper (734) 915-7989
- Jim Mather (734) 560-6856
- Gary Slater (734) 637-2809
- Rickey Dean (313) 205-6654
- Mark Rogers (248) 320-9289



## CHEMICALS

- If bringing a chemical(s) into a RedViking facility, for whatever purpose, the chemical must be in a container that is labeled with its contents and must include a proper safety data sheet.
- Notify your host that a chemical is being brought in. Visitor is responsible for the proper removal and disposal of the chemical in accordance with all applicable laws and regulations.

**Product Identifier**  
Should match the product identifier used on the Safety Data Sheets

**Signal Word**  
Indicates the relative level of the hazard's severity. "Danger" and "Warning" are the GHS signal words.

**Pictograms**  
Graphics intended to convey specific hazard information.

**UN No. 0000**  
**CAS No. 00-00-0**

**SIGNAL WORD**

**Supplier Identification:**

**Hazard Statements**  
A phrase assigned to a hazard class and category that describes the nature of the product hazards.

**Supplier Identification**  
The Supplier Identification is the name, address and telephone number of the manufacturer or supplier.

**Precautionary Statements**  
Describes recommended measures to minimize or prevent adverse effects resulting from exposure.

**Health Hazard**  
Carcinogen  
Mutagenicity  
Reproductive Toxicity  
Respiratory Sensitizer  
Target Organ Toxicity  
Aspiration Toxicity

**Flame**  
Flammables  
Pyrophorics  
Self-Heating  
Emits Flammable Gas  
Self-Reactives  
Organic Peroxides

**Exclamation Mark**  
Irritant (skin and eye)  
Skin Sensitizer  
Acute Toxicity  
Narcotic Effects  
Respiratory Tract Irritant  
Hazardous to Ozone Layer (Non-Mandatory)

**Gas Cylinder**  
Gases Under Pressure

**Corrosion**  
Skin Corrosion/ Burns  
Eye Damage  
Corrosive to Metals

**Exploding Bomb**  
Explosives  
Self-Reactives  
Organic Peroxides

**Flame Over Circle**  
Oxidizers

**Environment (Non-Mandatory)**  
Aquatic Toxicity

**Skull and Crossbones**  
Acute Toxicity (fatal or toxic)



## ENVIRONMENTAL

---

RedViking has implemented an Environmental Management System. While visiting any RedViking facility, please be aware of the following EMS commitments:

- The responsible maintenance of the environment we affect.
- Continually improving by recycling our waste, striving for zero pollution, and minimizing the environmental footprint of all the products we engineer and build.
- Complying with all laws, regulations, and stakeholder requirements regarding our environment.
- RedViking's Environmental Motto:
  - WHAT WOULD NATURE DO?



## SMOKING, DRUG, ALCOHOL POLICY

RedViking observes a strict no-smoking policy throughout its facilities. Smoking is allowed only in designated areas outside of RedViking buildings.

Additionally, controlled substances and alcohol are prohibited in all RedViking facilities.



## ADDITIONAL SAFETY INFORMATION

---

If there are other specific safety requirements that apply to you while visiting a RedViking facility, your host will notify you at the time of sign-in.

Please observe all safety requirements identified in this presentation as well as those posted in the facilities or verbally indicated by RedViking personnel. This will ensure your safety, and the safety of those around you, while visiting RedViking.



---

**Thank you for your cooperation and  
have a safe visit.**